



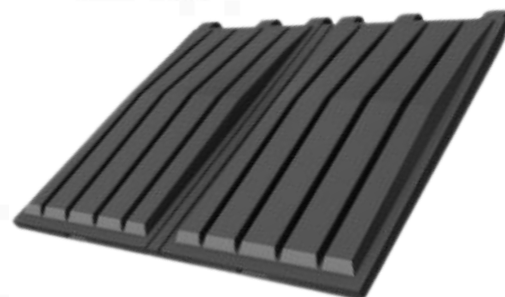
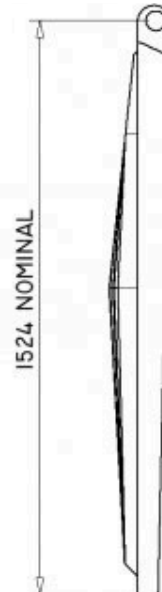
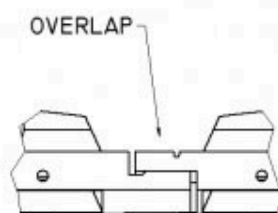
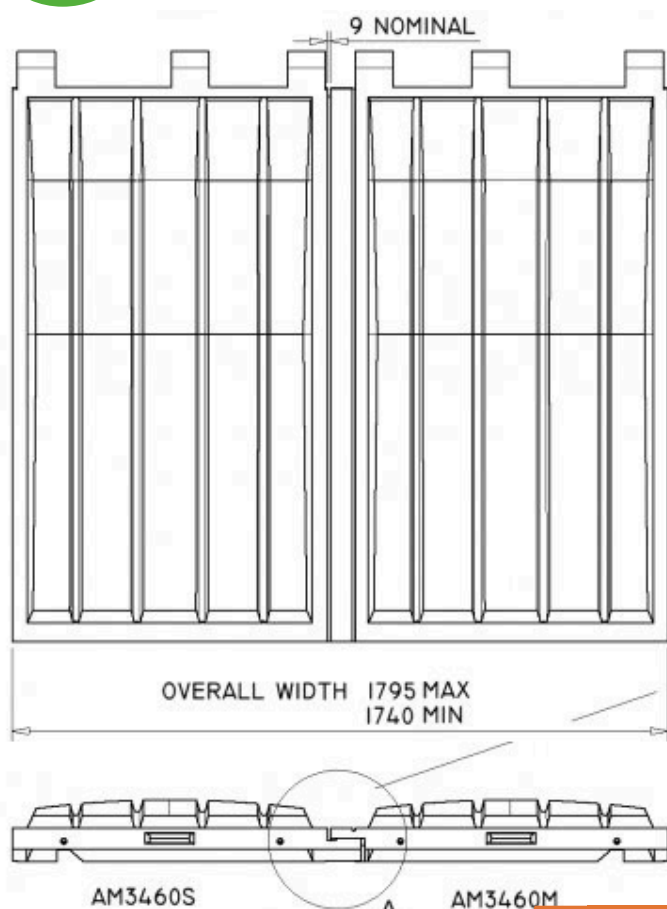
**IMPACT  
ENVIRONMENTAL  
GROUP**

# AM3460MM+SM Lid Pair

For use on Symmetrical Skips



Scan me to find out more



Dimensions: MM

## SPECIFICATION

Overlapping and watertight lid pair

IEG products are covered with a **12 Month Guarantee**, so you can rely on us to maintain hygienic and sustainable community & commercial spaces.

### Standard Spec

Rotationally moulded from UV-stabilised LMDPE

Double-walled

Oil, chemical and frost resistant

100% Recyclable

3 hinge lugs per lid for extra strength

5 ribs per lid and 'kiss off' areas for maximum strength

Moulded-in handles

Can be personalised with a custom name plate

Lids can be opened and closed by hand or bolted together for use with spring system

Overlapping pair prevents water ingress

Nestable design for cost-effective freight

### Optional Extras

Available as different dimensions (AM3463MM+SM pair and AM3468MM+SM pair)

Spring kit to facilitate opening of lids

Available in Black and a wide variety of colours

## Meet your sustainability goals, partner with IEG

The details provided in our specification sheets are for your general information and use only.  
They are subject to change due to the continual design and build development.



Moore Close, Holmewood Industrial  
Park Chesterfield, Derbyshire, S42  
5UX

+44 (0)1246 853 696  
enquiries@iegemea.com  
iegemea.com

Container Components Europe trading as IMPACT ENVIRONMENTAL GROUP



QMS<sup>+</sup> ISO 9001 : 2015 REGISTERED

QMS<sup>+</sup> ISO 14001 : 2015 REGISTERED