



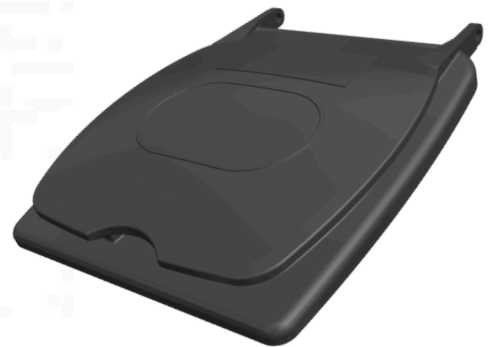
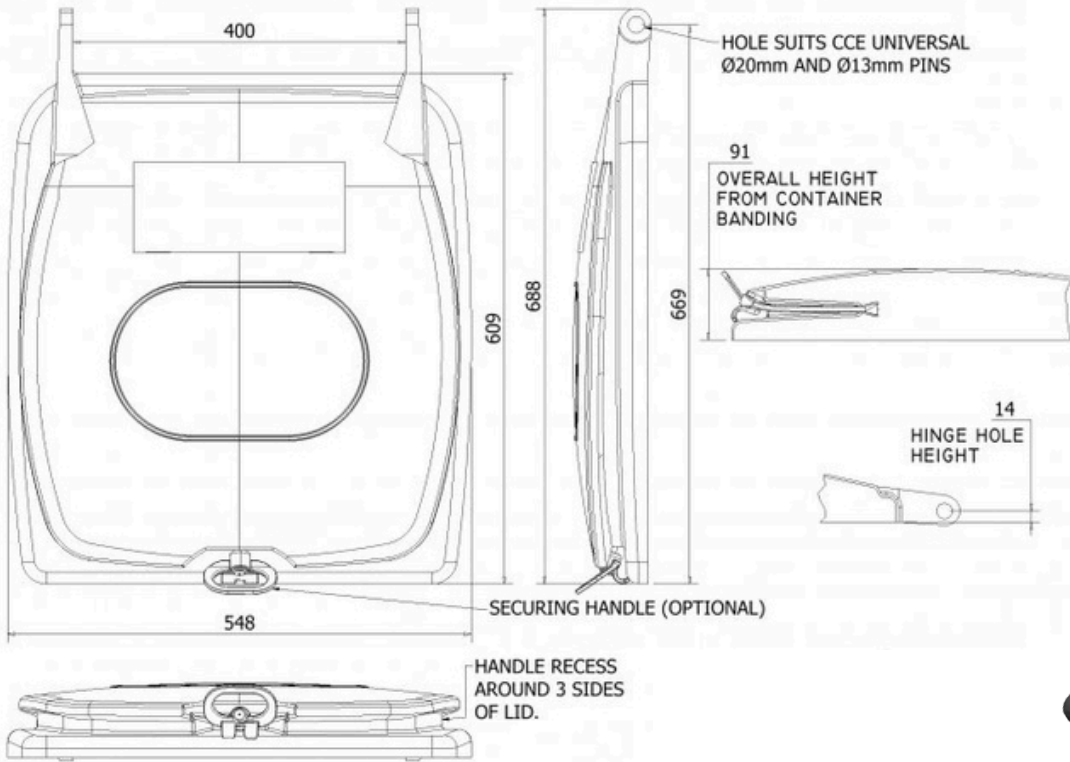
**IMPACT
ENVIRONMENTAL
GROUP**

240L Bin Lids

For 2-Wheeled Containers



Scan me to find out more



Dimensions: MM

SPECIFICATION

High quality, rotomoulded lid in a single skin format.

Standard Spec

Double-walled hinges designed for extra strength

Additional weight compared with original lid to prevent from blowing open

100% Recyclable

Designated areas for name or logo stickers

Lid can be opened from 3 sides

Handle slot for easy opening and closing

Can be personalised with custom name plate

Rotationally moulded for greater durability

Nestable design for cost-effective freight

Rotationally moulded from UV-stabilised LMDPE

Optional Extras

Universal 13mm lid pins for standard 240L hinge lugs & fixing bungs inclu. with lid -

20mm available on request

Retaining handle to keep lid closed

Replacement nose, wheels & axles for 120/140 & 240L bins

Meet your sustainability goals, partner with IEG

The details provided in our specification sheets are for your general information and use only.

They are subject to change due to the continual design and build development.



Moore Close, Holmewood Industrial
Park Chesterfield, Derbyshire, S42
5UX

+44 (0)1246 853 696
enquiries@iegemea.com
iegemea.com

