



**IMPACT
ENVIRONMENTAL
GROUP**

CS3i STATIC WASTE COMPACTOR

Scan me to find out more



Specification

The CS3i, short for intelligent allows for remote diagnostics, added efficiency and functionality to tailor to your business needs. Combining this with Capital Cloud IoT system to give live updates, monitoring and email notifications as standard.

Our CS3i compactors are mainly used for dry general waste of all varieties and can be adapted to requirements.

With fast cycle times, economy modes, high volume charge boxes and heavy duty compaction it is the perfect asset to a business looking to minimize your waste costs.



IEG products are also covered with a **12 Month Warranty Guarantee**, so you can rely on us to maintain hygienic and sustainable community & commercial spaces.

Technical Information

COMPACTION FORCE	30 Tonnes
POWER REQUIREMENT	16A 3Ph + N + E Socket outlet fused at 16Amp D type
If you have an existing supply that doesn't match this specification, please contact technical@iegemea.com to check if it's usable or discuss a solution)	
MOTOR	5.5kW
NOISE LEVEL	70dB at 3m From Unit
CYCLE TIME	40 Seconds
CHARGE BOX VOLUME	2.29m ³
VOLUME PER STROKE	2.00m ³
RAM DIAMETER	150mm
RUNNING HYDRAULIC PRESSURE	200 Bar
PINNING HYDRAULIC PRESSURE	210 Bar
OVERALL DIMENSIONS	3500mm (L) x 2560mm (H) x 1800mm (W) (+2510mm for Personnel Safety Enclosure)
VARIANT SHOWN	Side Bin Lift and Personnel Safety Enclosure

All machines are built following the CE and UKCA guidance and legislation

The details provided in our specification sheets are for your general information and use only.
They are subject to change due to the continual design and build development.



Unit 9E, Vinnetrow Business Park,
Vinnetrow Road, Chichester, West
Sussex, PO20 1QH

+44 (0) 1243 837614
enquiries@iegemea.com
iegemea.com

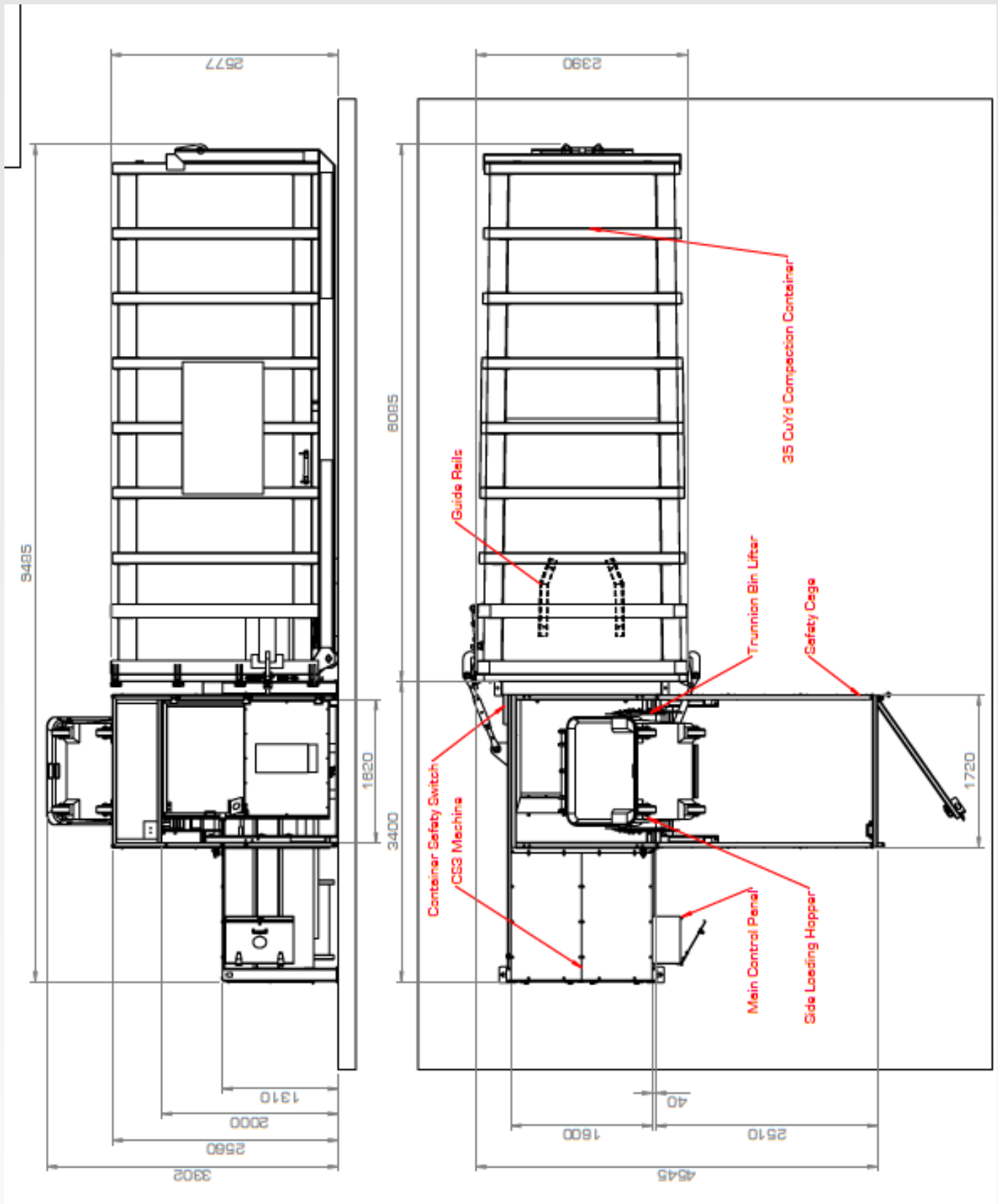
Capital Compactors and Balers trading as IMPACT ENVIRONMENTAL GROUP



QMS⁺ ISO 9001 : 2015 REGISTERED

QMS⁺ ISO 14001 : 2015 REGISTERED

Realise your sustainability goals & set the standard alongside IEG



The details provided in our specification sheets are for your general information and use only.
They are subject to change due to the continual design and build development.



Unit 9E, Vinnetrow Business Park,
Vinnetrow Road, Chichester, West
Sussex, PO20 1QH

+44 (0) 1243 837614
enquiries@iegemea.com
iegemea.com

Capital Compactors and Balers trading as IMPACT ENVIRONMENTAL GROUP



QMS⁺ ISO 9001 : 2015
REGISTERED

QMS⁺ ISO 14001 : 2015
REGISTERED